

Azure Stack Edge Mini R

The Azure Stack Edge Mini R brings the power of Azure compute, storage, and intelligence to the edge

Mobility and agility are critical when dealing with challenging and unknown environments. The Azure Stack Edge Mini R's lightweight form factor allows you to bring compute and storage to wherever you need it. This portable appliance can operate in a disconnected environment and connect to Azure once you have connectivity.

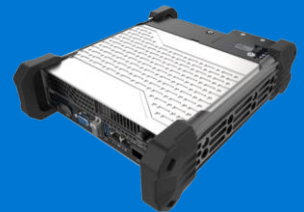
Designed for the toughest environments. Keep working in the toughest conditions, with a lightweight form factor as well as built-in battery and WiFi for easy portability. Remotely configurable and maintainable, and ruggedized for harsh conditions.

Operate in disconnected and connected environments. Whether you're connected to Azure or disconnected in an air-gapped environment, Azure Stack Edge Mini R can continuously provide compute and storage resources.

Benefit from hardware-accelerated machine learning. Build and train machine learning models in Azure, then utilize the built-in Intel VPU to accelerate the results locally on Azure Stack Edge Mini R. Upload the full dataset or a subset to the cloud to retrain your models and make your edge devices smarter.

Transfer data over the network. Whether you're transferring data to Azure, the Azure Stack Hub Ruggedized from Microsoft, or Azure Modular Data Center, the Azure Stack Edge Mini R acts as a cloud storage gateway and enables eyes-off data transfers to any one of the above destinations while retaining local access to files. With its local cache capability and bandwidth throttling to limit usage during critical/peak periods, the Mini R optimizes your data transfers.

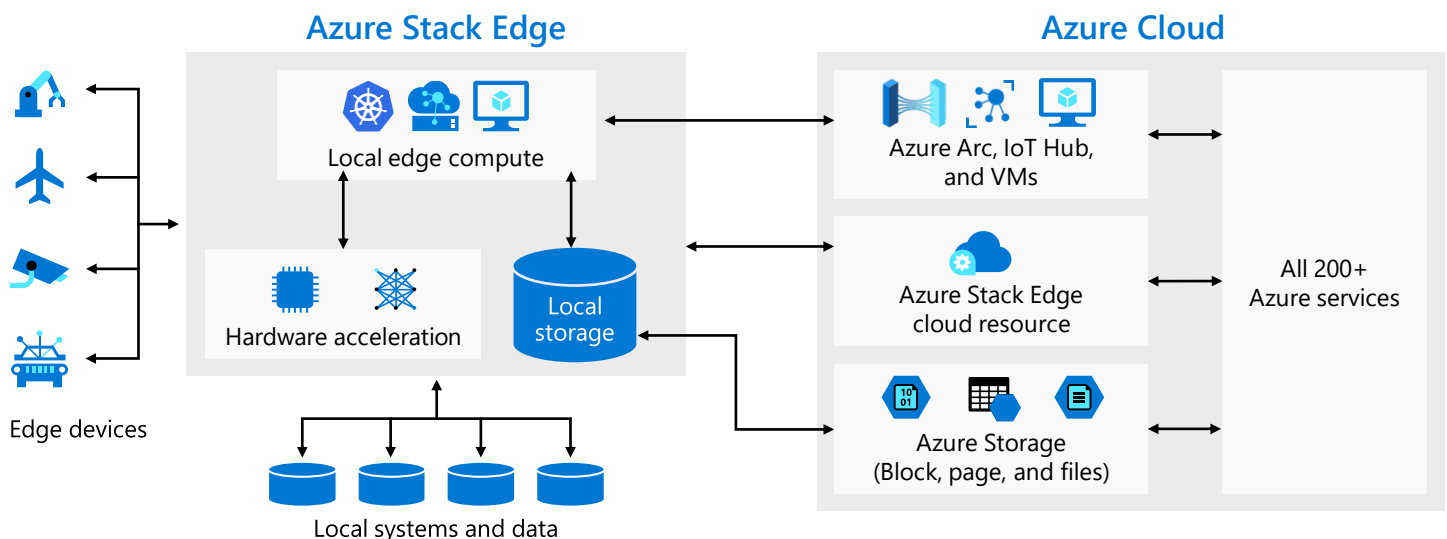
Azure Stack Edge Mini R is a cloud managed edge compute appliance from Microsoft. Instead of purchasing it, order from Azure as a service and pay monthly on your Azure subscription.



Do more at the Edge

Bring the compute, storage, and intelligence of Azure to wherever you need it, giving you fast results right where your data is generated.

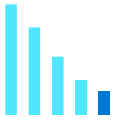
How Azure Stack Edge Mini R enables edge computing and machine learning



Why use Azure Stack Edge Mini R

The Azure Stack Edge Mini R brings the compute, storage, and intelligence of Azure right to where you need it – anywhere. It is simple to order and use, with high-speed connectivity to efficiently transfer data to the cloud. Easily manage your fleet of Azure Stack Edge devices from the Azure portal.

Use it to help solve challenges for edge use cases such as:



Edge and remote site compute

Run applications for your mission at remote locations to speed transactions and address bandwidth constraints in the harshest conditions.



Machine learning at the edge

Run machine learning solutions at edge locations for quick analysis and insights close to the data source.



Internet of Things

Use Azure IoT Edge to enable connecting to all your local IoT devices and analyzing the data they generate.



Regulatory compliance

Analyze data locally before sending to the cloud to ensure it is compliant and follows your data policies in any environment.



Network data transfer from the edge to Azure

Easily and quickly transfer data to Azure for further compute or archival purposes or to expedite your cloud migration.

Technical specifications

Specification	Details
CPU	16-core Intel Xeon-D 1577
RAM	48 GB RAM (2400 MT/s)
Local cache capacity	1 TB SSD storage
Data protection/security	AES 256-bit encryption
Dimension/Weight	10.5" L x 8.5" W x 2.5" H / <7 lbs (including battery pack) Ruggedized case
Network interface	2x 10Gbe SFP+ 2x 1Gbe RJ45; Wi-Fi
Accelerated ML	Intel Movidius Myriad X VPU
Power	110/240 (50/60 Hz)
Battery	73 WHr removable battery



To order
Azure Stack Edge
Mini R or learn
more

The Azure Stack Edge Mini R is available today.

To order Azure Stack Edge Mini R or to learn more about other products in the product family, visit azure.com/azurestackedge.